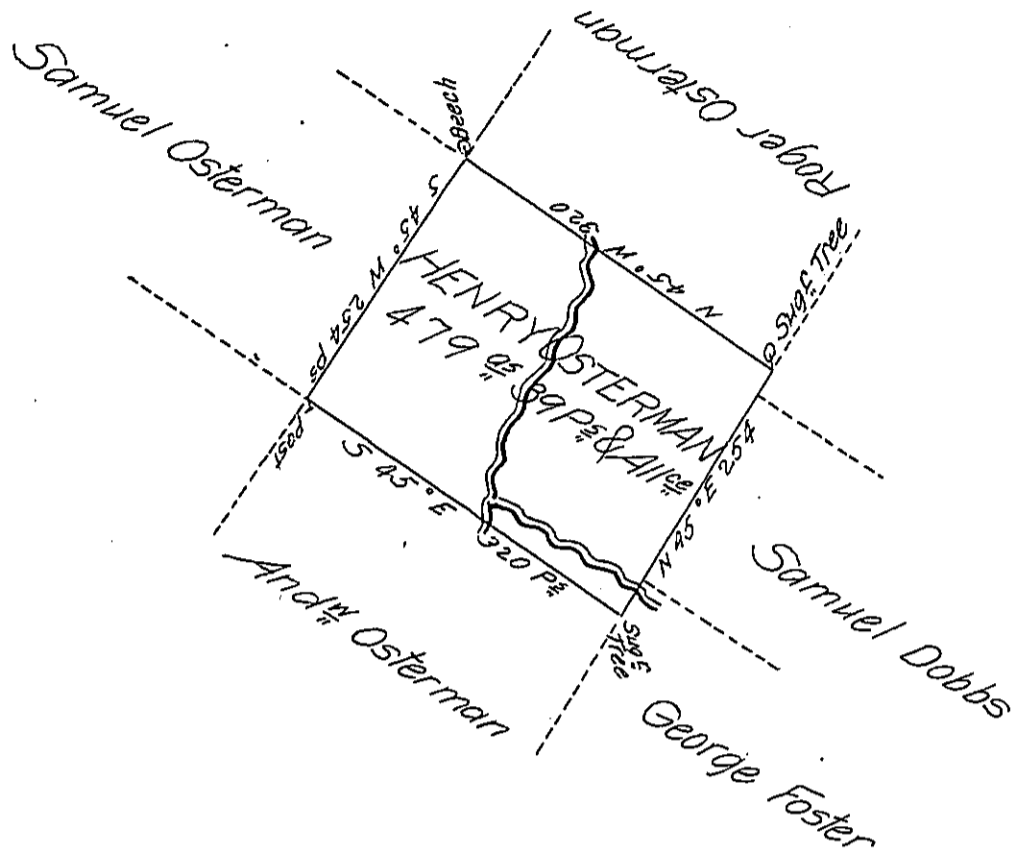


FORM No. 1.



A Draught of a tract of land Called \_\_\_\_\_ Situate Adjoining lands of Andrew Osterman others in Luzerne County Survd the 20<sup>th</sup> day of August 1788 for Henry Osterman in Pursuance of his warrant dated the 14<sup>th</sup> day of July 1788 Containing four Hundred and Seventy nine Acres & thirty nine Perch<sup>s</sup> and allow<sup>g</sup> of Six P<sup>o</sup>/<sub>100</sub> for Roads &c.

To John Lukens Esq<sup>r</sup> }  
 Survey<sup>r</sup> Gen! }

by Wm Gray D.S.

IN TESTIMONY that the above is a copy of the original remaining on file in the Department of Internal Affairs of Pennsylvania, made conformably to an Act of Assembly approved the 16th day of February, 1833, I have hereunto set my Hand and caused the Seal of said Department to be affixed at Harrisburg, this twentyfirst day of April 1906

*Joseph R. Brown*  
 Secretary of Internal Affairs.